

MAXUS 125K

258kWh

ENERGY STORAGE CABINET

*For Industrial &
Commercial
(Liquid Cooling)*

PRODUCT ADVANTAGES

Highly Integrated

Integrated design, Plug and Play, easy installation.

Efficient and Flexible

Modular design, support for multiple parallel;

Applicable to various working conditions,

Flexible load configuration.

iBMS

The New iBMS Realizes the Refined and Personalized Safety Management of the Battery Life Cycle.

Cloud Security Warning

Full-dimensional Security Warning Function,

7*24 Hours to Ensure the Safety of Battery Applications.

Safe and Reliable

IP54 Protection Level; Passed Electrical Safety, System Safety, Electrochemical Safety, Mechanical Safety and Other Safety Tests.

Intelligent and Friendly

Mobile App Monitoring the Product Operation Status and Revenue Data in Real Time.

SOC Correction Algorithm

Greatly Improve the Soc Accuracy to 3% in the Application Scenario Without Full Discharge; Soc Correction Algorithm Prolongs the Battery Life by 15%.

Thermal Management

Full-scene Thermal Simulation Analysis, Suitable for Complex Environments.

MAXUS 125K

258kWh



Product Spec.

Rated capacity	258 kWh
Rated Power	125 kW
Nominal Voltage	380Vac / Three-phase Four-wire
Max Apparent Power	125 kW
Rated Output Frequency	50 Hz
Unbalanced Load	100%
IP protection Level	IP54
Cooling Method	Liquid Cooling
Noise	<65 dB (1m From the system)
Size	W1578*D1400*H2132mm
Communication Interface	Ethernet
Communication Protocol	IEC60870-5-104, Modbus tcp, IEC61850-9
Certifications	EN50549, NEN-EN-IEC 62619:2022 , NEN-EN-IEC 61000-6-2 , UL 9540A , MSDS, UN38.3



Inside the Cabinet

- 01 System Monitoring
- 02 Meter
- 03 Surge Protection
- 04 PDU
- 05 Inverter Unit
- 06 Liquid Cooling System
- 07 Battery Pack
- 08 Ac Protection



Liquid Cooled Battery Pack

The standard liquid-cooled battery box adopts the integrated the liquid cooling system in the bottom of the box, and consists of 4 standard modules in series to form a battery box with a voltage of 153.6V and a capacity of 280Ah.



MULTIPLE CABINETS PARALLEL USE



PRODUCT SAFETY



High integration

- ALL IN ONE & modular design, easy for installation and maintenance
- Advanced integration technology ensures optimal system performance and lower cost



Safe reliable

- DC electric circuit safety management includes fast breaking and anti-arc protection
- Multi-state monitoring and linkage actions ensure battery system safety
- IP54 & C5 design , adaptable to harsh environmental



Efficient and flexible

- Intelligent cell-level temperature control ensures higher efficiency and longer battery cycle life
- Modular design supports parallel connection and easy system expansion
- Supports on/off-grid operation, improve system reliability



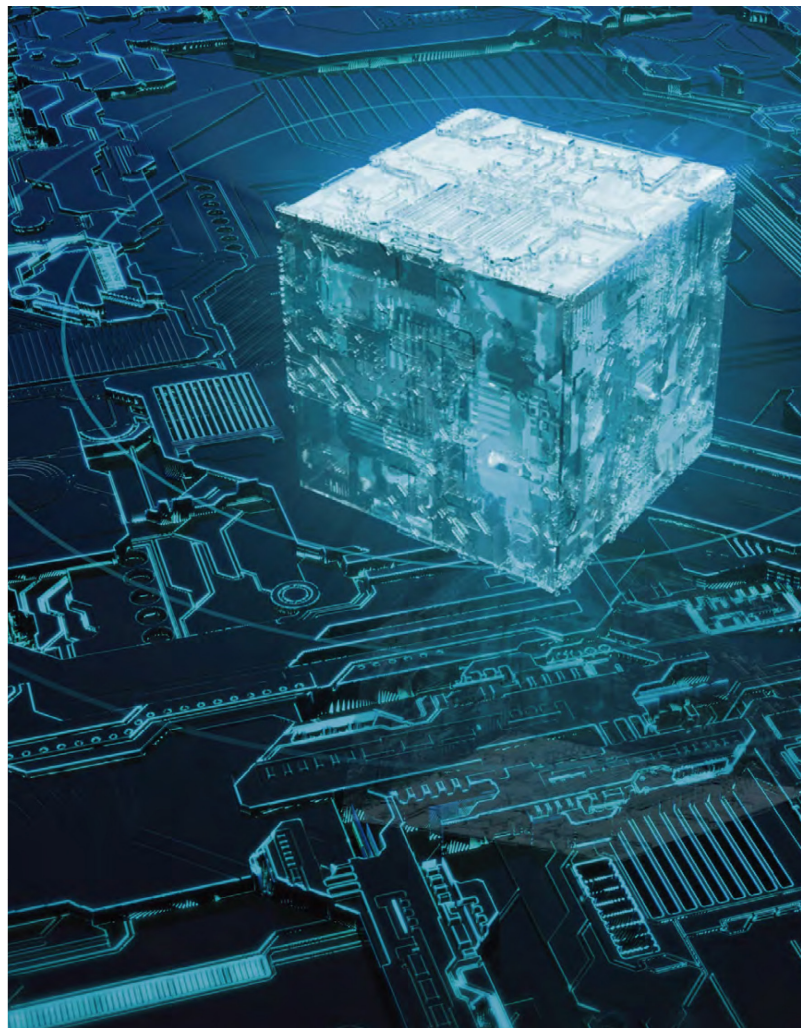
Intelligent and friendly

- Integrated local controller, unified communication interface
- Integrated energy management function
- Fast state monitoring and faults record enables pre-alarm and faults localization

PRODUCT FEATURES

IBMS

- ◆ The new IBMS realizes refined and personalized safety management of the battery life cycle through online learning and model updating;
- ◆ The SOC correction algorithm greatly improves the SOC accuracy to 3% in the application scenario without full charge and discharge; the SOP correction algorithm prolongs the battery life by 15%;
- ◆ Deploy a security early warning strategy on the cloud to monitor and judge abnormal situations in real time, including more than 30 items such as thermal field abnormalities, battery cell deterioration, internal resistance abnormalities, and liquid leakage abnormalities, to achieve full-dimensional security early warning functions.



PRODUCT FEATURES

Analyze thermal management based on simulation.

- ◆ Thermal simulation analysis of the whole scene has been applied to complex environments;
- ◆ Integrated air duct, hot and cold drainage, to ensure the consistency of system temperature;
- ◆ Separate electrical room and battery room, different temperature control, improve system efficiency;
- ◆ Formulate a temperature management strategy based on the cell temperature model to improve system energy efficiency.



PRODUCT FEATURES

Multifunctional product application.

- ◆ Support multiple parallel machines, flexible load configuration;
- ◆ Three-phase unbalanced 100% load, support single-phase load, support black start, and emergency power supply;
- ◆ The system supports manual/automatic mode, which can be used in various working conditions;
- ◆ Support load power monitoring, adjust power output in real time according to load changes, and avoid feeding back to the grid.



PRODUCT FEATURES



Intelligent energy storage platform.

- ◆ Cloud real-time income analysis, remote daily/monthly/yearly report income settlement
- ◆ Early fault diagnosis, remote shutdown, alarm, avoiding personnel approaching; remote operation and maintenance, periodic
- ◆ Remote control charging and discharging strategy, calibration of battery SOC
- ◆ Real-time fault detection, fault analysis, accurate analysis of fault causes and components, improve maintenance timeliness.
- ◆ Mobile APP function, users can monitor the product running status and revenue data in real time



BlauHoff

Printing errors are reserved.

For more information, you can always call or email us.

www.blauhoff.nl

Heemstraweg 123F - 6651KH Druten - The Netherlands

Mail: info@blauhoff.nl

Tel: 0031 (0)850711875